

Concrete Works of Colorado

In 1978, when they were in their early 20s and working as cement finishers, Marc Lenart and a friend scraped together \$3,000 and founded Concrete Works of Colorado in Brighton, CO.

In 1980, Lenart bought out his partner and the company – now headquartered in Lafayette, CO – has grown into a multimillion-dollar company that employs more than 120 workers and handles 15-20 jobs each year.

Commitment to Quality

“My philosophy has always been that quality is more important than quantity,” says Lenart.

“We try to live up to our reputation as one of the most respected concrete companies in the state by assuring quality work, astute attention to detail, and jobs that come in under budget and on time,” he explains.

Lenart and his staff say they are looking forward to extending that work ethic to the wind industry.

“Concrete Works of Colorado is committed to playing a major role in the ever-expanding renewable energy field,” says Vice President Dick Brasher.

Construction Services

“Our company has a solid history of being the best in the industry at completing a variety of large, difficult, and impressive projects, and our proven track record for work on complex projects exceeding industry standards makes us an excellent choice for all aspects of wind industry construction.”

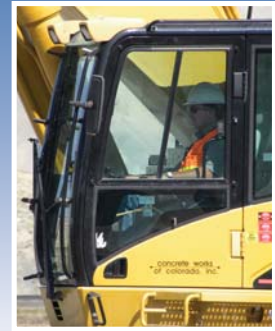
Brasher says some of the company’s services include:

- Concrete paving/flatwork.
- Excavating.
- Concrete structure work.
- Bridge and road construction.
- Storm/sanitary sewer/waterline improvements.

“We have worked on a variety of projects throughout our more than 30 years of business,” he says.

Brasher adds that the company’s project list includes every aspect of concrete construction including airport work, major street reconstruction, utility work, bridge reconstruction, and foundation work.

“We look forward to adding wind industry work to our list,” he concludes.



Concrete Works of Colorado

1260 Rock Creek Circle

Lafayette, CO 80026

303-665-2933

www.concreteworksofcolorado.com

Company Equipment

Portable Batch Plant

- CON-E-CO Low-Pro 427 CM portable batch plant, providing 12 cubic yards per load and up to 300 cubic yards per hour.

340 Construction Vehicles

- 65 fleet vehicles including equipment hauling semi-trucks, material hauling semi-trucks, service trucks, one fuel/lube truck, concrete mixer trucks, and concrete pumps.
- 15 excavators including a Caterpillar 365 CL.
- 28 pieces of dirt-moving equipment including skid steers, loaders, and backhoes.

